

# G3

## Multi-Biometric Time Attendance & Access Control Terminal



**G3** is a multi-biometric identification terminal which features ZKTeco's innovation Silk ID fingerprint sensor technology. With the world's cutting-edge 3D Neuron Fingerprint Algorithm, it precisely authenticates dry, wet, or rough fingerprints efficiently and accurately. Infrared technology enables the device to function automatically when fingerprints are detected. With the latest facial algorithm, it supports fake face detection.

# Features



Modern Design & Interactive UI



Revolutionary SilkID Fingerprint Sensor



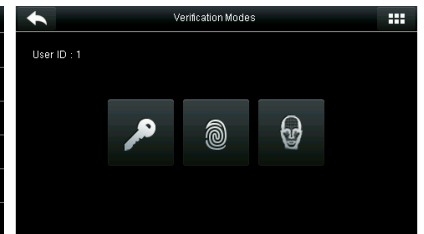
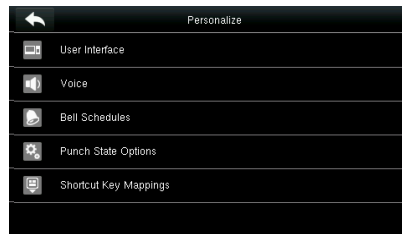
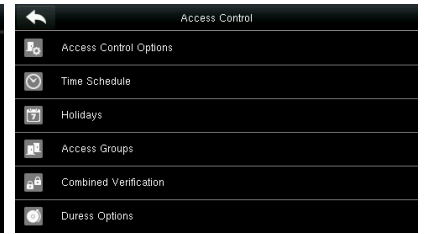
Multiple Verification Modes: Face / Fingerprint / Card / Password



Outstanding Performance With Dry, Wet and Rough Fingers



Simple Management & Scalability



# Specifications (G: GL Exclusive Feature)

## Capacity

Fingerprints	5,000
Faces	3,000 (1:N) / 4,000 (1:1)
Cards (Optional)	10,000
Transactions	100,000

## Communication

- TCP/IP
- USB Host
- Wiegand Output

## Access Control Interface

- Lock Relay Output
- Alarm Output
- Exit Button
- Door Sensor
- External Bell

## Hardware

- G 1.2GHz High Speed CPU
- G Memory 128MB RAM / 256MB Flash
- SilkID Fingerprint Sensor
- G 4.3 Inches Touch Screen
- Hi-Fi Voice & Indicator
- Tamper Switch Alarm

## Standard Functions

- ID Card / Work Code / WDMS
- DST / SMS / Bell Schedule
- Attendance Status Auto-Switch
- Record Query / Photo ID
- Custom Wallpaper & Screen Saver

## Special Functions

- G Multiple Biometric Verification Modes
- G Alive Finger Detection
- G Duplicate Face Detection

## Optional Functions:

- HID Proxy / Mifare Card Reader
- G Wi-Fi / 3G
- External Printer
- G Battery (2,000 mAh)
- G POE(Standard IEEE 802.3at)

## Compatibility

- ZKTime.Web
- ZKAccess 3.5
- WDMS

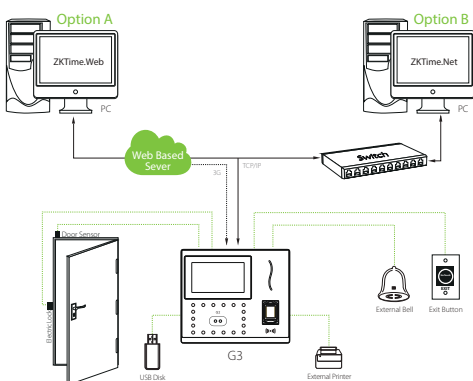
## Additional Info

- Working Temperature: 0 °C ~ 45 °C
- Dimensions: 199.2 × 171.8 × 96.9 mm
- ZKFace v7.0 & ZKFinger v10.0 Algorithms
- Fingerprint: FAR≤0.0001% FRR≤0.01%
- Face: FAR≤0.001% FRR≤1%

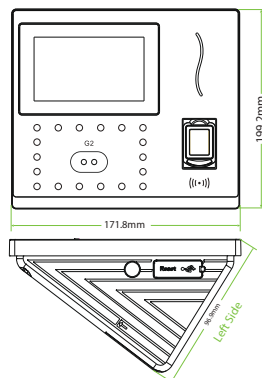
## Power

- Operating Voltage 12V DC
- Current Draw < 500 mA

# Configuration



# Dimensions (mm)



ZKTECO CO.,LTD.  
www.zkteco.com  
E-mail: sales@zkteco.com



© Copyright 2017. ZKTECO CO.,LTD. ZKTECO Logo is a registered trademark of ZKTECO or a related company. All other product and company names mentioned are used for identification purposes only and may be the trademarks of their respective owners. All specifications are subject to change without notice. All rights reserved.