



SECUPUS
www.xraysecuscan.com

X RAY BAGGAGE SCANNER

Brief introduction:

Model : SPX-6550DV

SOFTWARE INTELLIGENT & SAFETY

SPX-6550DV is a new type dual view dual-energy X-ray Baggage Scanner. It integrated two x ray generators, two sets of detector boards. SPX-6550DV has more efficient image processing technology. Horizontal and vertical images from the two viewing angles, will be simultaneously generated, while scanning a bag. It effectively solve the difficulty of reading the image of overlapping items in the luggage. This model helps the security person identifying dangerous goods and contraband more accurately and effectively.

HIGH LIGHT

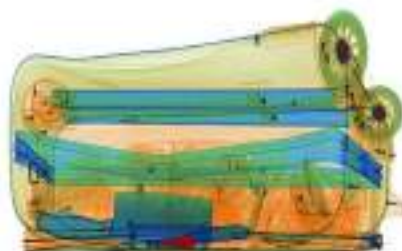
- ▶ Powerful image dealing ability
- ▶ Accurate Z7,Z8,Z9 mark for explosive and narcotics
- ▶ Windows 7 operation system
- ▶ Automatic save scanned image
- ▶ Friendly operation System
- ▶ Reliable performance
- ▶ Clear and distinct image
- ▶ Scanned imaged can zoom up to 64 times
- ▶ Partly zoom up to 3 times
- ▶ 13 kinds of image processing functions and 6 kinds of pseudo color
- ▶ Two monitors both show image in the middle

APPLICATIONS

- ▶ Customs, ports, border stations, railway stations, military, express, postal, road industry, government agencies and other key places of continuous, long security checks
- ▶ Applicable to large places of traffic, scanning large size parcels



HIGH QUALITY IMAGES



Keyboard with USB port, it is convenient to directly connect keyboard to download images .





SECUPUS
www.xraysecuscan.com

X RAY BAGGAGE SCANNER

Technical Parameters

Model: SPX-6550DV

Tunnel size	650mm*500mm (W*H)
Conveyor speed	0.20m/s, bi-direction scan,
Conveyor height	659.50mm
Maximum load	170kgs(evenly distributed)
Wire resolution	40AWG(dia 0.0787mm wire)
Spatial resolution	Level: dia1.0mm copper wire, Vertical: dia1.0mm copper wire
Penetration(steel)	38mm
Penetration resolution	32AWG (0.202mm)
Display	2pcs 21 inch color LCD monitor,high resolution: 1280*1024
X Ray generator anode voltage	160KV
Cooling cycle	Oil Cooling /100%
X ray generator	2 units, both 160KV, working in 150KV
Beam direction	View A : from bottom to top; View B: from Side
Image process	Black and white / color, anti-color, high energy penetration, super enhancement, histogram equalization, forced scanning, magnifying glass, image pull back / front pull, image storage
Material classification	Organic : orange ;Inorganic : blue ;Mixed and light metal : green
Section and magnification	Any area selection,1 -64 times magnification, support continuous amplification
Image pull back	Can pull back 50 images
Storage capacity	Can store at least 100000 pcs image
X ray leakage	<1μSv /h(at a distance of 5cm From external housing),meet all international and domestic health and safety standards
Film safety	guarantee ASA/ISO1600 Film
Software system	F1,F2,F3 programmable key,high density alarm, TIP;date/time display, baggage Count,User management, System work timing, Radiation timing, self-inspection while power on, save and search image, automatically maintenance and diagnosis system, image recognition training.
Optional function	Video surveillance system, LED prompt screen,voltage stabilizer, UPS back up
Physical size	2333*1170*1350.5mm (L*W*H)
Weight	1120kgs
Operation temperature/Humidity	-10℃~+45℃ 5%~95% (non-condensing)
Storage Temperature/Humidity	-20℃~+60℃; 5%~95% (non-condensing)
Operation power	220VAC (+/-10%) 50/60HZ
Power consumption	1KVA
Noise	Less than 55db

Authorized Distribution & Marketed By

SURVEILLANCE
SECURITY SYSTEMS
FIRE CONTROLS

Banglow No: 1/4-H, Block 6, P-E-C-H-S, Near
Majid-e-Sulemania, Shahrah-e-Faisal. Karachi.
Tel: 021-34325114-116 | UAN: 0304-1119292
Fax: 34330703
www.surveillance.com.pk