



SECUPUS
www.xraysecuscan.com

X RAY BAGGAGE SCANNER

Brief introduction:

Model: SPX-100100

SOFTWARE INTELLIGENT & SAFETY

SPX-100100 is a new type dual-energy X-ray Baggage Scanner and has more efficient image processing technology. It effectively solve the difficulty of reading the image of overlapping items in the luggage. This model helps the security person identifying dangerous goods and contraband more accurately and effectively.

It stands out with more modern and ergonomic design for efficient and professional X-ray screening. It is perfectly suitable for baggage inspection in airports, railway stations, customs, ports, and stadiums, etc.

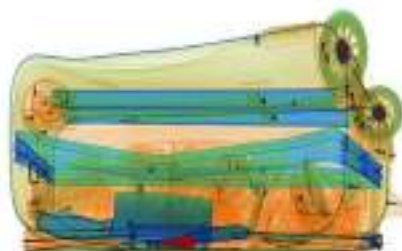
SPX-100100 combined with unsurpassed operation ergonomics, reliability and safety can provide excellent image quality and advanced material classification. SPX-100100 can also be adjusted to enhanced option to meet situations that require higher image quality. SPX-100100 offers explosive and drug auto detection as optional.

HIGH LIGHT

- Powerful image dealing ability
- Accurate Z7,Z8,Z9 mark for explosive and narcotics
- Windows 7 operation system
- Automatic save scanned image
- Friendly operation System
- Clear and distinct image
- Scanned imaged can zoom up to 64 times
- Partly zoom up to 3 times
- 13 kinds of image processing functions and 6 kinds of pseudo color
- Reliable performance



HIGH QUALITY IMAGES



Keyboard with USB port, it is convenient to directly connect keyboard to download images .





SECUPUS
www.xraysecuscan.com

X RAY BAGGAGE SCANNER

Technical Parameters

Model: SPX-100100

Tunnel size	1010mm*1005mm (W*H)
Conveyor speed	0.20m/s, Bi-direction scan
Conveyor height	300mm
Maximum load	200kgs(evenly distributed)
Wire resolution	40AWG(dia 0.0787mm wire)
Spatial resolution	Level: dia1.0mm copper wire, Vertical: dia1.0mm copper wire
Penetration(steel)	36mm guarantee, 38mm typical
Penetration resolution	32AWG(0.202mm)
Display	17 inch color LCD monitor,high resolution: 1280*1024
X Ray generator anode voltage	160Kv
Cooling cycle	Oil Cooling /100%
Beam direction	Downward
Image process	Black and white / color, anti-color, high energy penetration, super enhancement, histogram equalization, forced scanning, magnifying glass, image pull back / front pull, image storage
Material classification	Organic; orange; Inorganic: blue; Mixed and light metal: green
Section and magnification	Any area selection,1 -64 times magnification, support continuous amplification
Image pull back	Can pull back 50 images
Storage capacity	Can store at least 100000 pcs image
X ray leakage	<1μSv /h(at a distance of 5cm From external housing),meet all international and domestic health and safety standards
Film safety	guarantee ASA/ISO1600 Film
Software system	F1,F2,F3 programmable key, high density alarm, TIP, date/time display, baggage Count, User management, System work timing, Radiation timing, self-inspection while power on, save and search image, automatically maintenance and diagnosis system, image recognition training.
Optional function	Video surveillance system, LED prompt screen, voltage stabilizer, UPS back up
Physical size	3595.5*1685*1795mm (L*W*H)
Weight	980kgs
Operation temperature/Humidity	-10℃~+45℃; 5%~95% (non-condensing)
Storage Temperature/Humidity	-20℃~+60℃ 5%~95% (non-condensing)
Operation power	220VAC (+/-10%) 50/60Hz
Power consumption	1KVA
Noise	Less than 55db

Authorized Distribution & Marketed By



Banglow No: 1/4-H, Block 6, P-E-C-H-S, Near
Majid-e-Sulemania, Shahrah-e-Faisal. Karachi.
Tel: 021-34325114-116 | UAN: 0304-1119292
Fax: 34330703
www.surveillance.com.pk