

DS-KABD8003-RS1 Protective Shield



- Convenient design available for the 1 module surface mounting of the modular door station (DS-KD8003-IME1 or DS-KD8003-IME2)
- Material: SECC

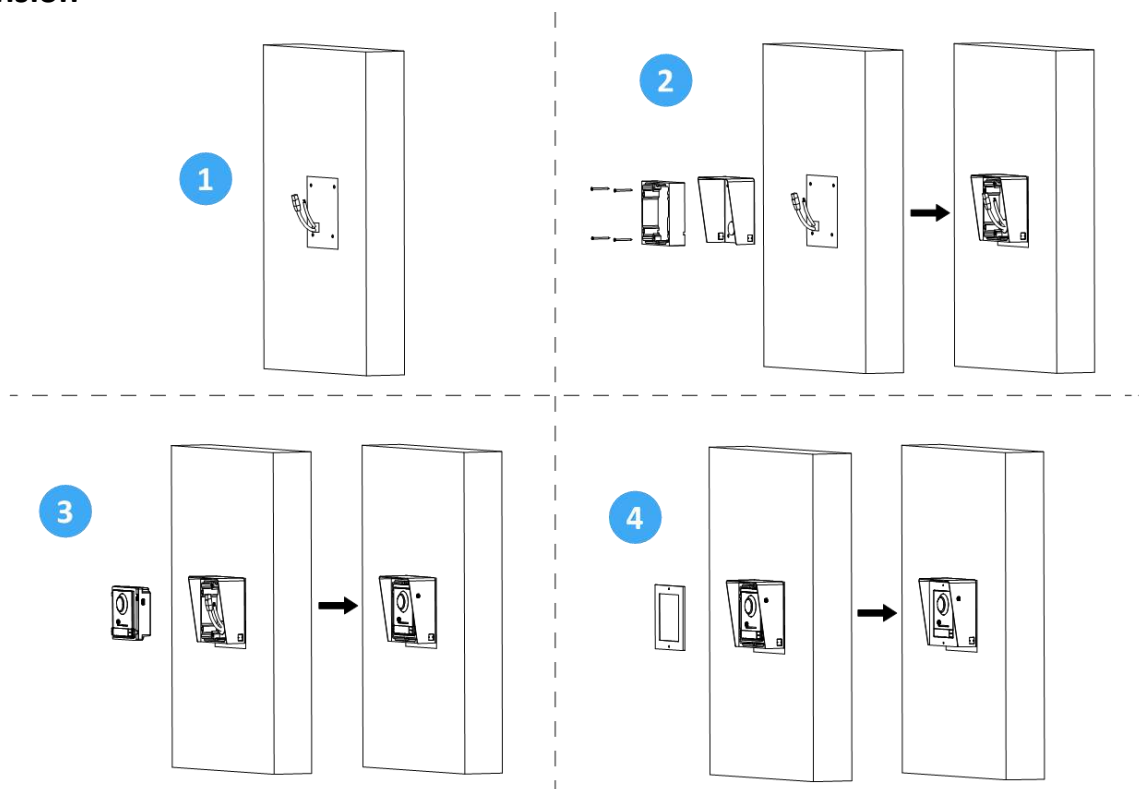
▪ Specification

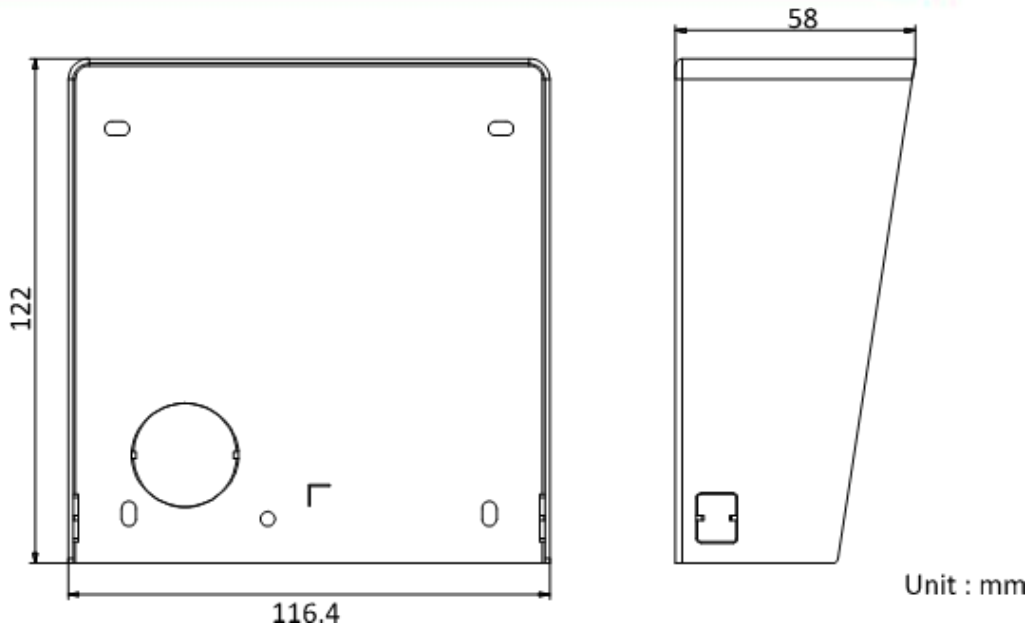
General	
Working temperature	-40 °C to 60 °C (-40 °F to 140 °F)
Weight	Net weight: 0.295 kg
	Gross weight: 0.513 kg
Working temperature	-40 °C to 60 °C (-40 °F to 140 °F)
Working humidity	10% to 95% (No condensing)
Dimension (W × H × D)	122 mm × 116.4 mm × 58 mm (4.80" × 4.58" × 2.28")
Material	SECC

▪ Available Model

DS-KABD8003-RS1

▪ Dimension





▪ **Accessory**



DS-KIS702EY



DS-KD-ACW1/S



DS-KD8003Y-IME2/S



DS-KD8003-IME1#EU



DS-KD8003-IME1/S



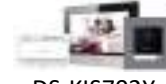
DS-KIS7024Y-G#EU



DS-KIS7023Y-G#EU



DS-KIS7021Y-S#EU



DS-KIS702Y



DS-KD8003-IME1/Surface



DS-KD8003-IME1(B)/S



DS-KD8003-IME2



DS-KD-ACW1#EU



DS-KD8003Y-IME2/NS



DS-KIS702/S#EUROPE



DS-KD8003-IME1(B)/NS



DS-KD-PMR



DS-KIS702Y#EU



DS-KD8003-IME1/NS



DS-KD8003-IME1(B)/Surface



DS-KD8003Y-IME2



DS-KIS702/S#Europe



DS-KD8003-IME2/NS



DS-KIS702



DS-KIS7024Y-S#EU



DS-KIS7021Y-G#EU



DS-KIS7022Y-G#EU



DS-KIS7022Y-S#EU



DS-KIS7023Y-S#EU



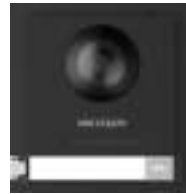
DS-KD8003-IME1(B)



DS-KD8003-IME2/S



DS-KD8003-IME1/Surface#EU



DS-KD8003-IME1



DS-KD-ACW1

Headquarters

No.555 Qianmo Road, Binjiang District,
Hangzhou 310051, China
T +86-571-8807-5998
www.hikvision.com



Follow us on social media to get the latest product and solution information.



HIKVISION



HIKVISIONHQ



HIKVISIONHQ



HIKVISION_Global



HIKVISION
Corporate Channel



HIKVISIONHQ